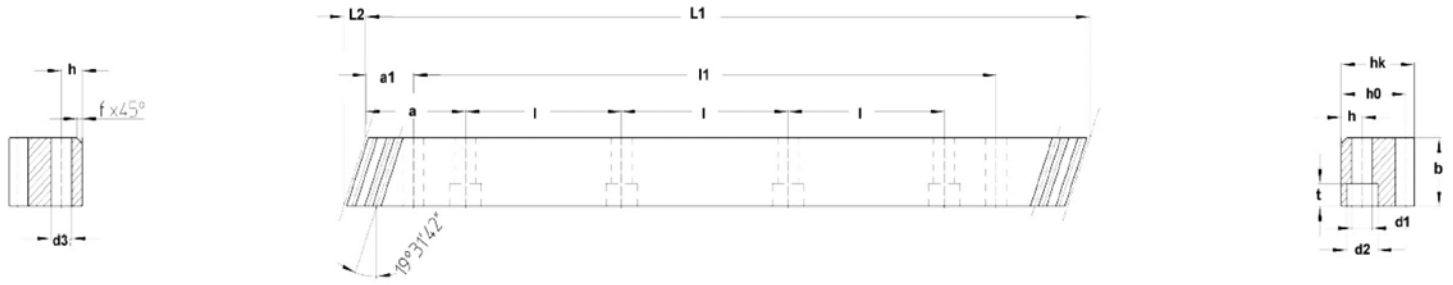


## Helical Gear Rack

Produced to AGMA 9 standard, 20° pressure angle, with mounting holes and machined ends

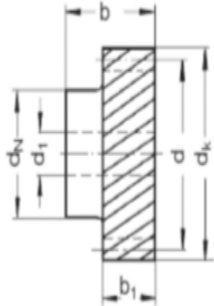


Part #	Module	$L_1$	$L_2$	Number of Teeth	$b$	$h_k$	$h_0$	$a$	$l$	Number of Holes	$h$	$d_1$	$d_2$	$t$	$a_1$	$l_1$	$d_3$	kg
R1.5-150BR	1.5	1500.00	6.0	300	17	17	15.5	62.5	125	12	6	6	10	6	31.7	1436.6	5.7	1.95
R1.5-200BR	1.5	2000.00	6.0	400	17	17	15.5	62.5	125	12	6	6	10	6	31.7	1436.6	5.7	2.60

Note that rack is between HB200 and HB260 (Brinell Hardness)

If you intend to butt rack pieces for extended length, you will need our inexpensive L1.5-15-TOOL to accurately align.

## Helical Tooth System, left-hand, 19° 31' 42", prebored



Hardened to HRC23-HRC28 (Rockwell hardness)

Part #	Number of teeth	$b_1$	$b$	$d$	$d_k$	$d_1$ (J8)	$d_N$	kg
S1.5-16LQ-12.7 *	16	17	30	25.47	28.47	12.7	30	0.18
S1.5-25LQ	25	17	30	39.79	42.8	9	30	0.22
S1.5-25LQ-12.7 *	25	17	30	39.7	42.8	12.7	30	0.22
S1.5-32LQ	32	17	30	50.93	53.93	9	30	0.25
S1.5-32LQ-12.7 *	32	17	30	50.93	53.93	12.7	30	0.25

\*Helical gears with PN suffix "12.7" have 1/2" bore, keyway and two set screw holes. This configuration makes these models ready-to-use with many gear boxes and motors. Other models supplied with plain 9mm bore for customer to modify as needed.